

# **European Roadmap on the implementation of the circular economy for end-of-life recreational boats**

---

Philip Easthill - European Boating Industry (EBI)



Advancing and representing a sustainable boating and nautical tourism industry #MadeInEurope.

# Scope of issue in Europe



Marine (including commercial) uses about 72 kilotons, i.e. **2-3% of composite use in Europe**



Fleet of **6.5 million boats**, mostly smaller than 7.5 m, minimum lifetime **40-50 years**

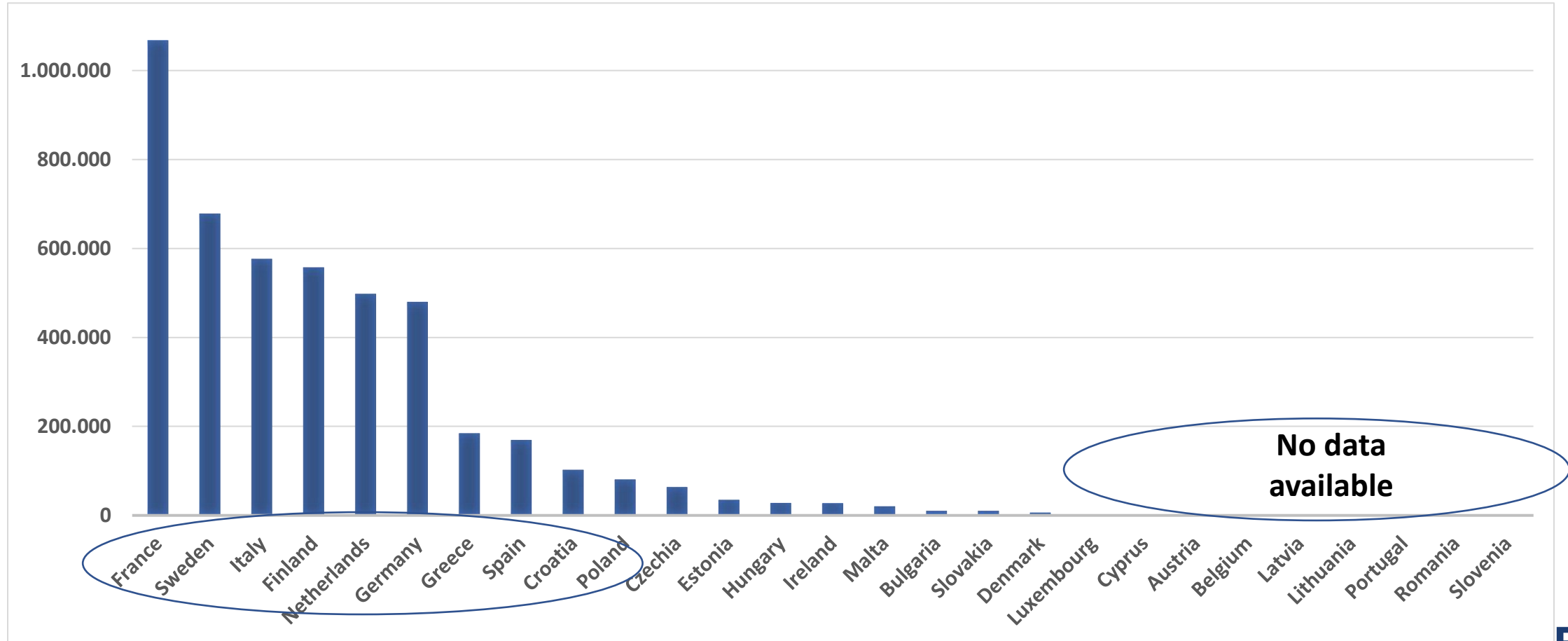


**30-40 000 boats reaching end-of-life** until 2030 with potential annual recycling need of **23,1000 – 30,800 tons**



**72% of waste** from dismantled boats subject to recycling or energy recovery (wood, metal, composite) in France

# Overview of fleet per country



# Development of roadmap

**➔ Strategic approach to solve issue by 2030 by tackling major bottlenecks with European and cross-sectoral approach**

Stakeholder Group led by European Commission DG MARE and EBI

---

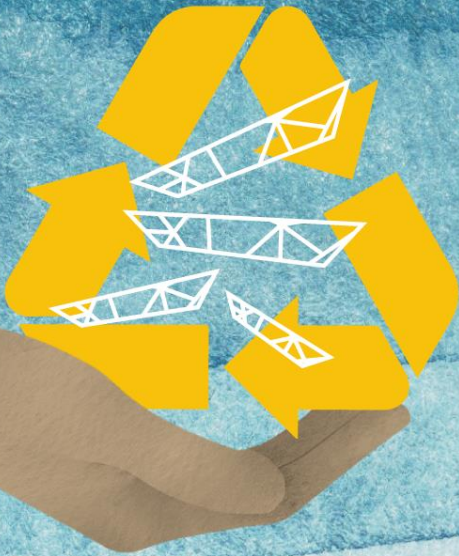
- Co-creation process between public and private sector, including all stakeholders
- Series of hearings with experts from industry, users, academia, recycling companies and related industries
- Official submission of Recommendations to Commissioner for Environment, Oceans and Fisheries Virginijus Sinkevičius in December 2022

**A roadmap on the implementation  
of the circular economy for end-of-life  
recreational boats**





**A roadmap on the implementation  
of the circular economy for end-of-life  
recreational boats**

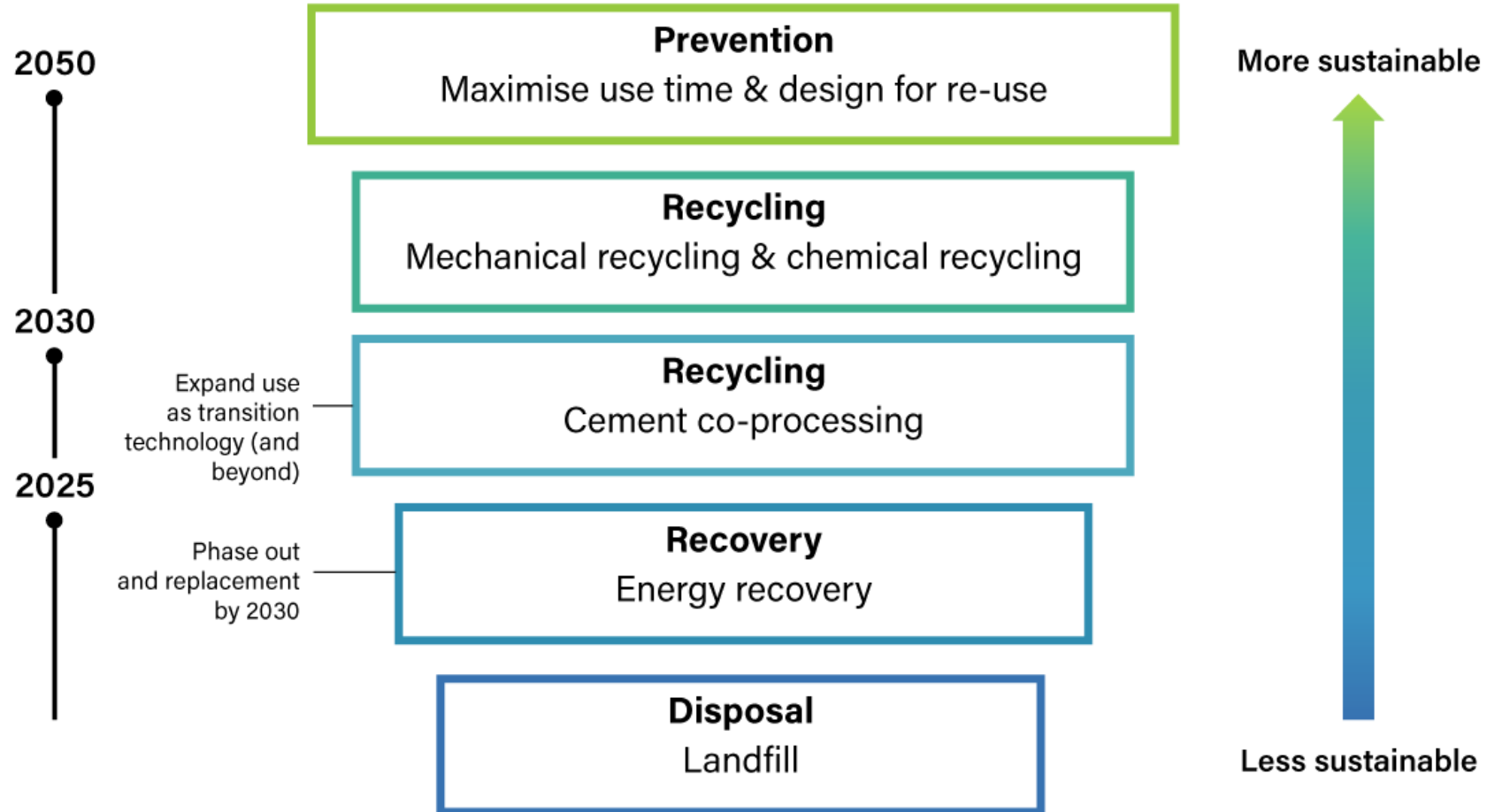


1. **Financing:** EU support, cross-border approach
2. **Dismantling & transport:** EU-level data, dismantling funding system, revision of Waste Framework Directive, Boat removal, on-site dismantling
3. **Recycling:** Land-filling phase-out, cross-sectoral cooperation, incorporation of recycling technologies
4. **Research & Innovation:** EU R&I funding, potential inclusion in EU RCD through LCA data
5. **Implementation** through EU Network on end-of-life boats

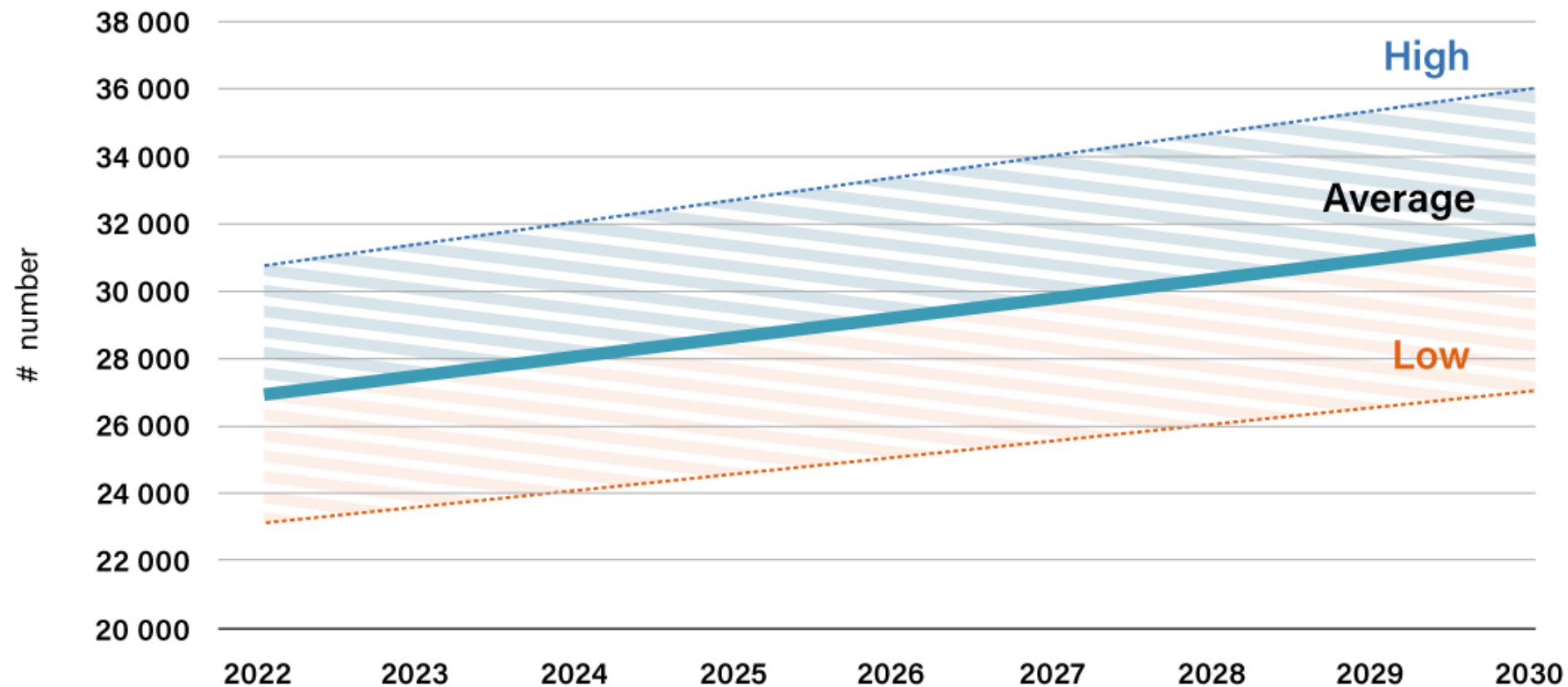


**Commitment of industry: Phase-out of least sustainable recycling solutions for composite waste by 2030**

## Proposed recycling pathway until 2030 and 2050



# Estimate of potential composite boat waste (weight)





**Thank you for your attention!**



**European Boating Industry**



**@EBI\_Boating**



**[www.europeanboatingindustry.eu](http://www.europeanboatingindustry.eu)**



**[pe@europeanboatingindustry.eu](mailto:pe@europeanboatingindustry.eu)**

**Advancing and representing a sustainable boating and nautical tourism industry #MadeInEurope.**